

If you buy it of T. H. CRAIG, you know it is right

### OUR OPTICAL DEPARTMENT

Is just a little different from most Optical Houses in as much as we do not only fitting of glasses but also do the lens grinding in Our Shop. We can duplicate and replace broken lenses in about one hour's time. If you break a lens and don't have the prescription save a few pieces of the broken parts, and we can measure them up and grind a duplicate of the original.

We make a specialty of Fitting Glasses and Guarantee Satisfaction.

**H. CRAIG**  
JEWELER

5 Main St. - - - Champaign, Ill.

If you want to put on a swell front send your Laundry to the

**White Line Steam Laundry**  
BELL 406 AUTO 1550.

### DICKSON VOICE and PIANO SCHOOL

Superior advantages. Fine Studios and recital hall. Special courses. Pupils may commence study at any time.

### FIRST NATIONAL BANK BUILDING

**The University Press**  
Under First Nat'l Bank  
URBANA, ILLINOIS

**The Marinello Shop**

Has removed from N. Neil St. to

**No. 2 Main Street**

Over Armstrong's Shoe Store  
Bell Phone 1817 Auto 2172

All kinds of Printing  
As you like it  
When you want it  
This is the shop that makes the nice Dance Programs .....  
Auto 4434 :: Bell 740

We clean Clothes so they are  
**Really Clean**

**L. B. SOUDER, Dyer and Dry Cleaner**  
WALKER OPERA HOUSE  
Bell 900 Auto 1650, 1225

**KANDY'S**  
University Barber Shop  
Tailoring and Pressing in Rear  
510 E. Green St.  
Auto Phone 2265

**URBANA BANKING COMPANY**  
URBANA, ILLINOIS.

**Christian Science Services**  
Christian Science services of First Church of Christ, Scientist, Champaign, are held in the church edifice at the corner of University Avenue and Elm Street, Sunday at 10:45 a. m. and 7:30 p. m. Subject for this Sunday: "Are Sin, Disease and Death Real?"  
Sunday School at 9:45 a. m.; Wednesday evening meeting at 7:30. Free reading room, suite 401, First National Bank Building, Main and Walnut Streets, open daily, except Sunday, from 9 a. m. to 5 p. m. All writings of Mary Baker Eddy and all the publications of The Christian Science Publishing Society on sale. The public is cordially invited.

**Episcopal Church**  
Services for members of the University Sunday, April 14. Holy Communion 8 a. m.; morning prayer and sermon 11 a. m.; Bible study for students at 906 South Goodwin Avenue 7 p. m.; Monday, Daughters of the King 5 p. m.; Tuesday, Brotherhood of St. Andrew, 6:30 p. m.; Friday, litany and confirmation instruction, 7 p. m.  
Nitobe to Speak Sunday.  
Dr. Inazo Nitobe, exchange professor from Japan, who is lecturing here during the month, will speak at the morning service at Trinity Methodist Episcopal Church next Sunday, April 14.

### DR. NITOBE DESCRIBES AGRICULTURE IN JAPAN

Speaks to Ag Students in Morrow Hall Upon Farming Conditions in Island Empire.

Dr. Inazo Nitobe in his lecture yesterday afternoon in Morrow Hall on the subject, "Agriculture in Japan," discussed the general methods of farming, the characteristics of the agricultural classes, and the different measures adopted by the government for the improvement of the standard and condition of agriculture in Japan. "We look upon agriculture not only as a source of food and raiment," he said, "but as a source of men, because the best soldiers come from the farming class."

The whole empire of Japan stretches over some twenty-eight degrees of latitude, about the same distance as from the mouth of the St. Lawrence River to Cuba. This embraces both the temperate and tropical zones. Only fourteen per cent of the whole area of Japan at present is under cultivation. This makes for very intensive farming; the Japanese get more from one acre of ground than the people in this country get from two or even three acres. From this small area of land, almost enough food is obtained to feed the entire population of Japan, over 50,000,000 people.

The principal crops are rice, barley, wheat, soy beans, and buckwheat. The chief food of the people is rice, soy beans, and various vegetables. Fish, meat, and eggs are added to the diet of the wealthier classes. In the southern part of Japan, sweet potatoes are raised extensively and form an important article of food among the agricultural classes.

The average holding of land of the peasant farmer is only about two and one-half acres. The peasantry cultivate very small tracts of land. Sixty per cent of the land is cropped twice, and sometimes three times. Fertilizers are used extensively, not so much to enrich the land as to force the crops. Horses and cattle are far from plentiful, and stock farming or cattle raising has never been developed to any extent. The culture of the silk-worm is the greatest single industry in the country.

The government has been trying to diffuse agricultural education among the farming classes. In the last ten years it has started 7,000 co-operative societies for the bettering of conditions. The government has also through its power of public domain rearranged the land-holding so that it lies in contiguous tracts.

**What is Unitarianism?**  
On Sunday morning at the 11 o'clock service, the Rev. A. R. Vail of the Unitarian Church will open a series of four sermons on the Unitarian conception of Christianity. Special topics:  
Unitarian Poets and Prophets—April 14.  
Miracles and Revelations—April 21.  
The Vision of God in Jesus—April 28.  
The Unitarian Answer to the Question: What Is it to Be a Christian?—May 5.  
Sunday evening from 7 to 8 Mr. Vail will lead a discussion on the social teaching of the English essayist and novelist, H. G. Wells. Unitarian Church, corner of Mathews Avenue and Oregon Street.

**Presbyterian Guild**  
Regular church services, to which all are invited are held Sunday morning at 11 o'clock in Morrow Hall. Martin E. Anderson, Presbyterian University pastor, preaches; music in charge of Professor C. H. Mills. Young People's League meets in Presbyterian Hall Sunday evening at 6:30. Regular Christian Endeavor topics are followed. Come and meet your fellow students.

**Notice to Philomatheans**  
The Excelsior program is postponed until Saturday evening, April 20.

### WOODIE'S PRESSING PLACE

504 East Green Street 40 West Main St.  
Bell 1505 Auto 2171 Bell 766  
Clothes Pressed and Shoes Shined \$1.00 per Month  
Clothes called for and delivered.

**Thos. Franks & Son**  
East University Avenue  
**FLORISTS**  
The Largest Greenhouses in Central Illinois. Flowers of all Kinds.

Half-Tone and Line Engravings for All Purposes  
**NATIONAL ENGRAVING COMPANY**  
24 North Walnut Street Phone 411 Champaign, Illinois

**It's Up To You**  
To Decide How You Should Appear in Company  
Have you ever noticed the difference of hand-pressed and machine-pressed clothes?  
Give Us Just One Trial Exclusive Hand-Pressing  
**Paris Dyeing and Cleaning Co.**  
7 North Neil St. Champaign  
Goods Called for and Distributed Both Phones

Hairdressing  
Shampooing  
Manicuring  
Facial and Scalp Massage  
Electrolysis  
**CAROLYNE L. KREMER**  
Co-op Building Second Floor  
631 So. Wright St.  
Bell Phone 194 - - Auto 2165  
Formerly 215 W. Main, Urbana



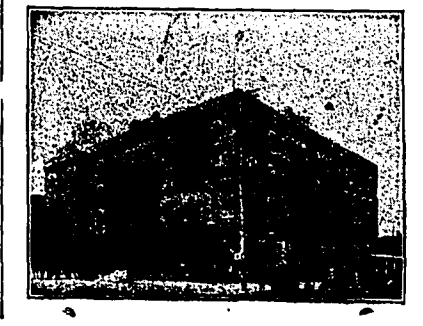
Dance Programs, Fraternity Stationery  
Chapter Letters, and Publications.  
**PRINTING ENGRAVING BINDING EMBOSING**

**BEN LONG**  
2- Two Barber Shops -2  
No. 36 Neil St. No. 9 Main St.  
**CHAMPAIGN**

**Munhall PRINTING HOUSE**  
CHAMPAIGN, 18 TAYLOR ST.

**Spalding & Quirk**  
EXCLUSIVE DRUGGISTS  
RED CROSS STORE  
57 N. Neil Street.  
GREEN CROSS STORE,  
Cor. Green and Sixth.

**E. M. MOLL, REPAIR SHOP**  
Electric Supplies  
New Bicycle, complete Coaster Brake, \$19.50 till April 1, \$25.00 value  
E. M. Moll's Roadster \$25.00, \$30.00 and \$35.00.  
**Bicycle Repairing and Auto Supplies**  
**TIP-TOP HEELS**  
FIRST CLASS SHOE REPAIRING  
Come in and have Tip-Top Heel lifts put on. Heels built up for 35c better than Lion Plates and Noisless.  
ARE THICK LEATHER WITH STEEL INSERTED. NOISELESS. Not Slippery. Not Visible.  
Fit for FINE SHOES or HARD WEAR. Wear Longer. Prevent Runover.  
**ATTACHED WHILE YOU WAIT AT**



**The Beardsley HOTEL**  
Special Attention to Banquets  
Private Dining Room Service  
CHAMPAIGN, ILLINOIS